

# RE-MAKE WRINKLES

---

## A Guide for Maintaining the Family Wardrobe in Wartime

Paper shortage accounts for the distinctly altered size and aspect of the new booklet "Re-Make Wrinkles." Only a limited number can be printed; consequently, you are urged to study the contents and pass it on. The booklet is recommended as a basis for community sewing projects.

Issued by the  
CONSERVATION PROGRAMME  
CONSUMER BRANCH  
WARTIME PRICES AND TRADE BOARD

Weapons wear new guises in World War II. Thrift, care and conservation have joined the fighting forces! The battle goes on . . . not only in the arid wastes of Africa . . . not only in the buffeted beaches of the Aleutians . . . but in the comfortable homes of Canadians. *Your* home is an important part of a fighting machine that rolls inexorably and with increasing swiftness toward Victory, YOU are the colonel-in-chief of your division of that fighting force. Your orders of the day, and every day, are to conserve, to take care of what you have . . . to mend, make-over and make-do.

YOU are the thrifty housewives who recognise the warmth and the comfort still to be found in the outmoded and outgrown clothes lying dormant in your cupboards, who snip and stitch and seam to create sturdy snow suits of old summer coats . . . who re-cut a sweater as a warm and wooly cardigan . . . who re-vamp a plaid skirt as a gay school jumper.

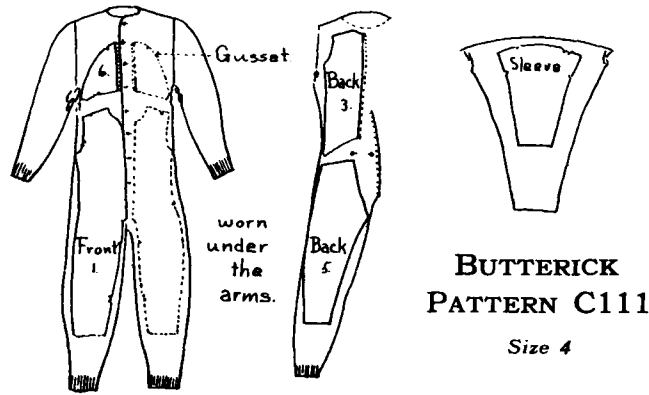
Many of you are already playing an important part in clothing conservation. To aid you further "Re-Make Wrinkles" has been planned — to show you tested ways of bringing new life to out-moded clothes. The material has been selected after many experiments in re-making. The "cast-offs" illustrated are to be found, in most cases, right in your own clothes cupboard.

## Basic Principles as applied to "Re-Makes"

1. Buy as little as possible. When combining materials have enough variety for interest, enough similarity to preserve unity.
2. Children like color. Don't be afraid to restore or to change color by the use of dyes. Good directions are given on all the packages.
3. Frequently better surface and color are obtained by turning the material; in which case none of the old work may be saved. Before washing try a scrap of the material, and always abide by the washing rules for specified fabric.
4. Consider the personality and coloring, the age and development of the child. Make clothes easy for him to get on and off — make fastenings easy for small fingers to manipulate, e.g. — use buttons that are big enough, and if possible avoid putting them in hard-to-get-at places. (See page 9.)
5. Consider the purpose of the garment, the type of wear, the laundering or cleaning — make sure that your material and pattern are practical and suitable. Use reinforcements in the form of patches on the knees of overalls (see page 17), detachable cuffs and trouser bands on snowsuit (pages 14 and 15).
6. Keep everything in proportion — when mother's coat is cut down to size 4 — the big buttons and buttonholes no longer belong on it.
7. If there is any doubt about getting one garment out of another try laying the pattern on top of the garment before doing any ripping. Avoid unnecessary ripping, and try to preserve as much of the original work as is compatible with good designing (see dress No. 1 on page 24, suit on page 28). Never cut anything until the entire layout is planned.
8. Make as much allowance for growth as your cloth permits.
9. When laying your pattern avoid worn spots, moth holes, bad stains, etc. Where it is impossible to miss a small hole or thin spot, do invisible mending or reinforcing with threads of the material.
10. If it is necessary to use joinings that can't be concealed, make them an integral part of the design, not just seams at random — see coats, page 26, 27. Sometimes a joining may suggest a line of decoration at it does in dress 3, page 13. If the material dictates a change in the design, making it necessary to cut the pattern, a duplicate may be traced for the purpose — see jacket, page 22.
11. Never waste material. Save some scraps for repairs.
12. Good fitting is essential to appearance and comfort.
13. Use finishes that will last throughout the life of the garment.
14. Set yourself a high standard throughout the project. If you are inexperienced you will achieve a more professional result by having the buttonholes made.

**SPECIAL NOTE:** Wartime Prices and Trade Board restrictions governing clothing do not apply to Re-makes.

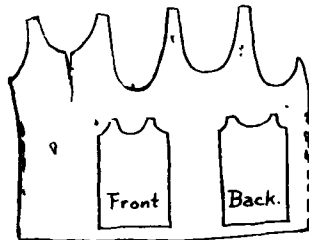
## Underwear!



BUTTERICK PATTERN C222 is a two-piece set, very convenient for small children who require frequent changes. Both patterns include the short sleeve, knee length version as well as the long.

If you prefer the little sleeveless vest and training pantie, why not cut a pattern from the old ones, with an allowance for growth?

*Dad's old undervest.*



Open out flat by cutting through the worst line of holes. Shoulder straps may be formed by the binding that finishes neck and armholes.

*Nice warm snuggies, worn and shrunk!*



Make beautiful panties for the very young.



These training panties take very little material and are easy to make. For the convenience of the child use a casing and elastic at the waist, if you can get it. Otherwise put on a band and button it to the waist to hold it up.

### A few suggestions regarding the handling and finishing of knitted fabrics

If the material is loosely knit it is likely to ravel when cut. To avoid this and to prevent stretching, trace off a paper pattern, baste it to the material and stitch around on the finished seam line. Then cut the garment along the edges of the pattern and tear off the paper. It may also be necessary to do some of the stitching involved in the construction on paper.

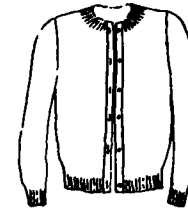
For bands, facings, etc., use woven fabrics, as they will stay the edges and give a firm foundation for fastenings. It is possible to finish some of the edges with a crochet hook and suitable thread.

## Other Good Uses for discarded Knitted Garments

Lady's Sweater

becomes

Small Boy's Cardigan



Ribbon faded.  
Garment shrunk.

To prevent raveling, stitch around armholes and tops of sleeves. Rip out sleeves. Adjust length of shoulder and of sleeve. Turn up to correct length or cut it off and face. Put new 1" grosgrain ribbon on front edges and around neck, holding neck edge in to correct size. The ribbon will lie flat if the fullness is taken out by tiny darts. If sleeves are too badly worn make a sleeveless cardigan, using a facing or binding on armhole edges. Put tape on shoulder seams to prevent stretching. NOTE: If sweater is too large for this treatment, use pattern for entire re-cutting.



Respect his masculinity by reversing the buttons and buttonholes.

Complete set of accessories from one old sweater.

MCCALL SHEET S-2 gives patterns and full directions.



A good chance for you to show your skill in decorating. NOTE: Hold front of cap in well. Use tape to prevent stretching.

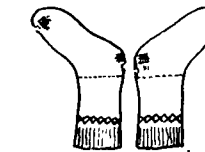
Have you a hoard of socks you can no longer mend and make do?



Cut by VOGUE PATTERN, 2242, or SIMPLICITY PATTERN 4348.

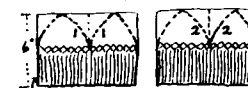
Yes! It's Socks! And the cosiest, warmest Dressing Gown ever made. Mounted on grey flannelette; edges featherstitched. Collar, cuffs and pocket from an old sweater.

One Pair of Socks = One Beanie



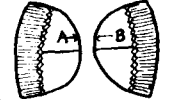
cut at dotted line  
Join 1 to 1, 2 to 2.

Wool pompon at tip.



may be cut off or rolled up.

Join A to B.



Baste it up and fit it before stitching.

Little Cat Paws!



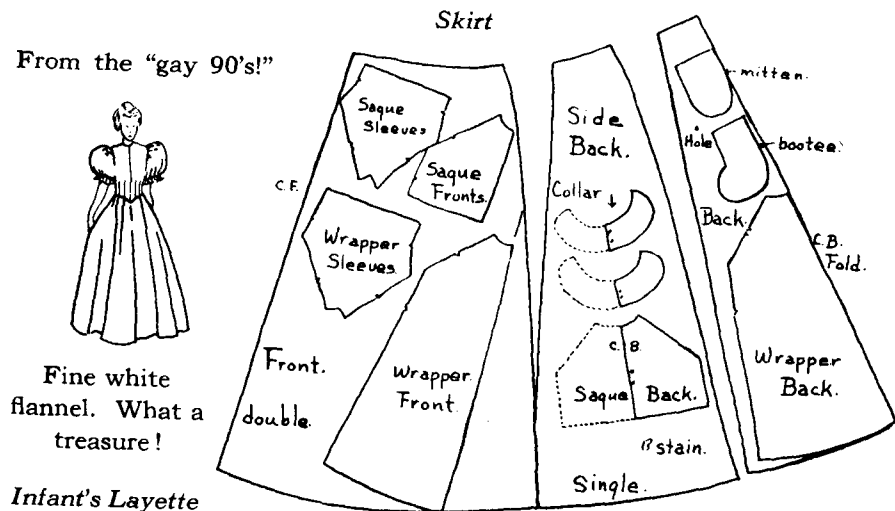
MCCALL PATTERN 1075 gives excellent suggestions for top treatment.

Cut soles from very felted knitted fabric, from felt, leather or fur, heavy coating. Make tops of bits of old sweaters, socks, or other knitted material; or knit them of ravelled wool; or use pieces of necktie or similar material, interlined and perhaps quilted; or use felt from old hats. Try decorating them with needlework, cut-outs, or painted designs. Insoles give more support.

## Our Hope for the Future —

A list of baby necessities may be obtained from the Doctor, or from the Baby Book published by your Provincial Department of Public Health. The first thing to consider is the comfort of the infant. It is wise to make allowances for growth, so that full value may be gained from the materials and the effort put into the making of the garments.

It is every woman's duty to see that these youngest Canadians, children in many cases of our fighting men, have those things necessary for their comfort. It is every woman's privilege to help the young mother over a difficult period by supplying her with a few of the "frills" her heart desires. Perhaps that old party dress tucked away at the bottom of the chest would like to add a little glamour to a baby's bassinette. How about planning a little surprise?



From the "gay 90's!"



Fine white flannel. What a treasure!

**Infant's Layette**

Patterns:  
VOGUE 2329  
MCCALL 4382

Both garments may be lined. Edges ribbon or silk bias. From the Vogue Set.

**Bootees**



**Cap**



**Mittens**



From the MCCALL LAYETTE.

**Wrapper**

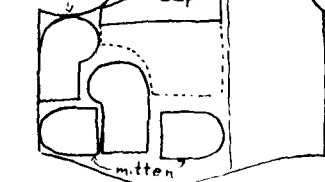


Cut Bonnet Facing from second side back. A silk lining may be used in bonnet if wool irritates.

One sleeve was missing so material below is single.

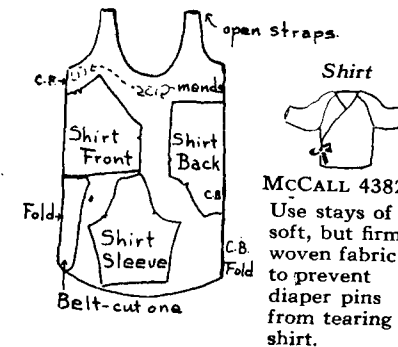
**Sleeve**

**Bootee**



## The Babies of Today

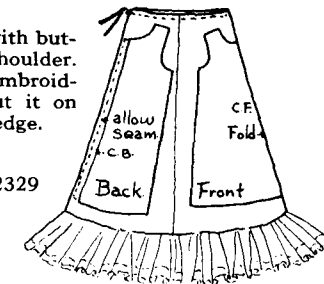
**Lady's Undervest.**



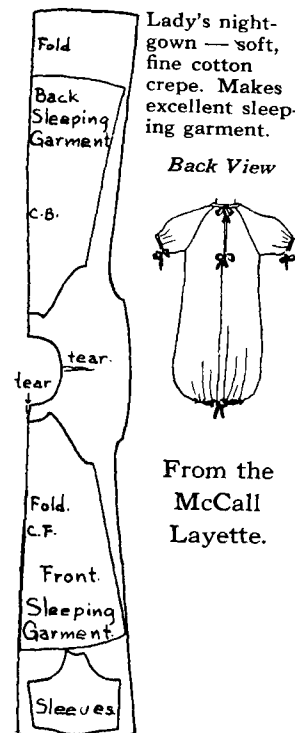
**Shirt**  
MCCALL 4382  
Use stays of soft, but firm woven fabric to prevent diaper pins from tearing shirt.

**Yes, it was worn! A Petticoat.**

Gertrude, with buttons on shoulder. Save the embroidery and put it on the lower edge.

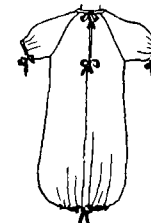


VOGUE 2329



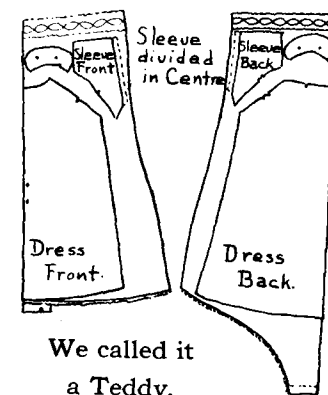
Lady's night-gown — soft, fine cotton crepe. Makes excellent sleeping garment.

**Back View**



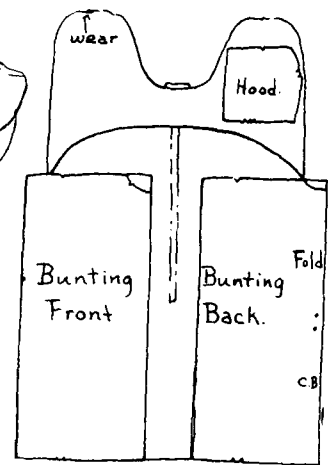
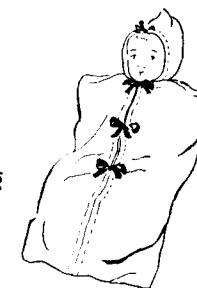
From the McCall Layette.

Nice, fine Nainsook for Baby's Dress. Put a bit of lace on the collar and sleeves.



We called it a Teddy.

**Bunting Vogue Set**



Other Needs: 1. Diapers from old sheets, etc. If badly worn don't hem — just pink the edges. From old bath towels make pads 5" x 8" to put inside diapers. Worn linen towels become soft wash cloths and baby towels. Make soakers from white wool socks or similar articles. A supply of 8" squares of old soft cotton will save much hard work if used as diaper linings.

Chinchilla Snuggle-Bunny worn and strained in spots.

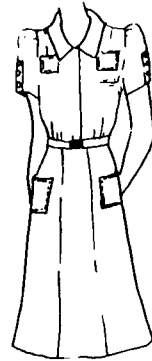
# Need Sleepers?



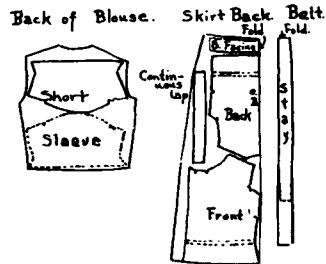
**Maternity Dress**  
(long tucked away).  
Size 36

Do these two frocks remind you of anything?

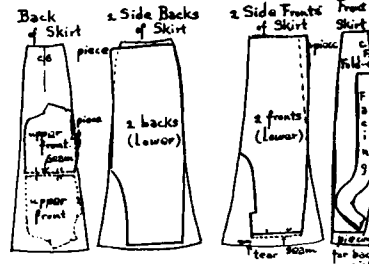
**House Dress, Redeemed from Duster Bag.**  
Size 38



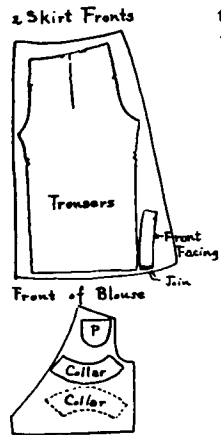
Badly worn under arms, front of blouse torn. Otherwise material sound. Color good. Well worth the effort.



For a quick change it is sometimes a help to have "two pant" sleepers. Try combining materials in them, and in the one-piece variety with the drop seat.



Split front of pattern at waist line, marking corresponding points for matching. Allow seams.



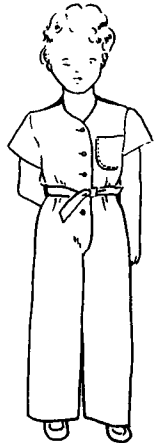
**MCCALL PATTERN No. 5344**  
Size 4



**VOGUE PATTERN No. 2235**  
Size 6

# And More Sleepers?

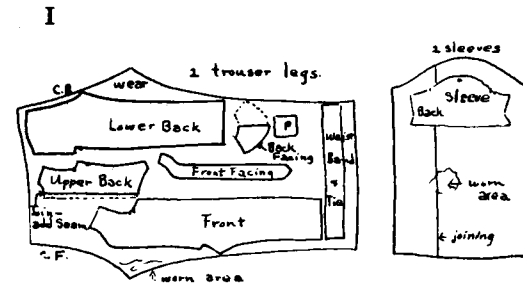
Here is one to gladden the heart of the busy mother who wishes her small child would be more independent.



A one-piece garment with drop seat, but no buttons in the back. The belt is easily slipped through carriers on the sides, and knotted or buckled in front.

**MCCALL PATTERN No. 4949**

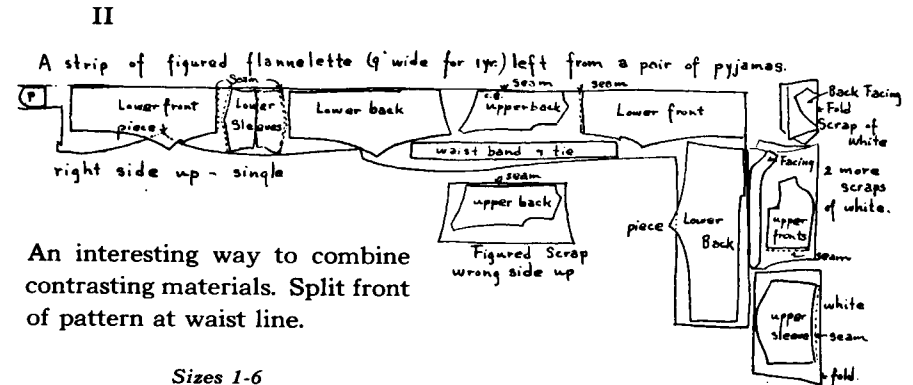
And here are two ways of getting it without buying any material:



A pair of grown-up pajamas, ripped up, and worn parts discarded, may allow for this layout.

Size 1

A good job for your scraps of flannelette. Dig them out.



An interesting way to combine contrasting materials. Split front of pattern at waist line.

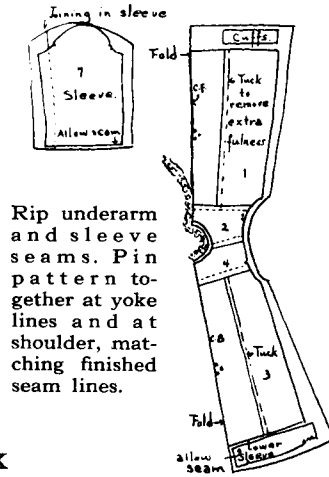
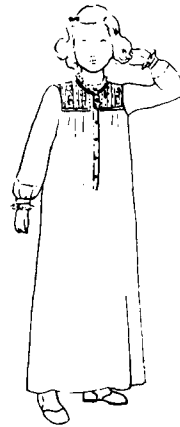
Sizes 1-6

# Nightgowns and Pyjamas



White Flannelette.

Two quick changes—from mother's wardrobe to daughters.



Rip underarm and sleeve seams. Pin pattern together at yoke lines and at shoulder, matching finished seam lines.

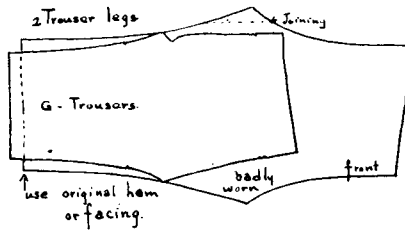
**BUTTERICK PATTERN No. 2280**

Size 10

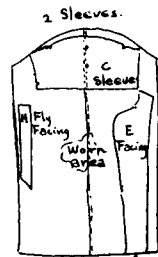
These pyjamas are enough like "dad's" to please Junior.



Save the smocking.

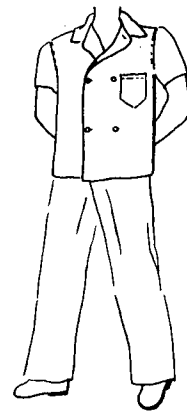
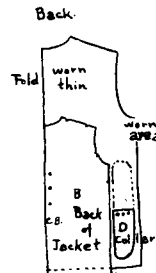


Man's pyjamas—ripped apart.



piece if necessary

use original finish

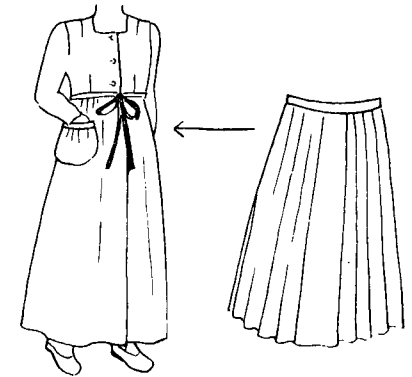


**DU BARRY PATTERN 5499**

Size 8

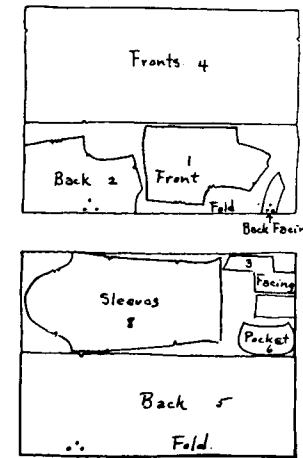
# Dressing Gowns

The old plaid wool pleated skirt is given a new life.

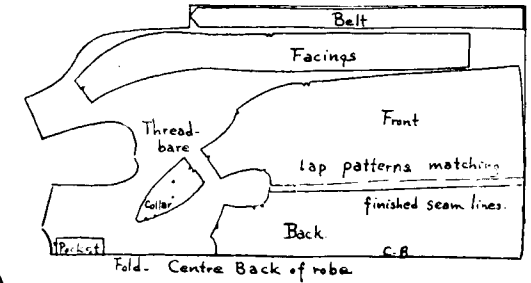


**BUTTERICK PATTERN 2558**

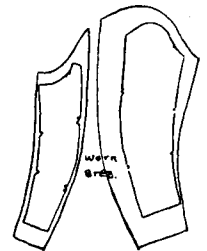
Size 10



Tie belt contrasting.

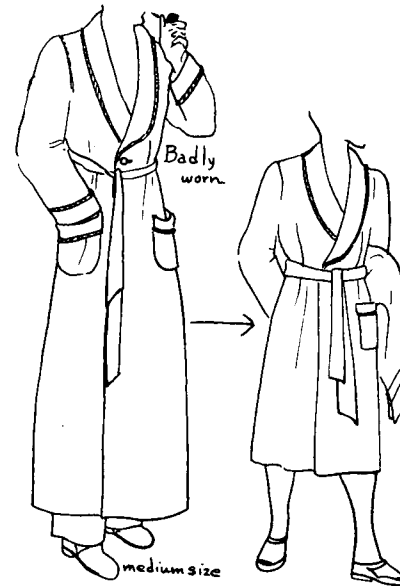


This robe was in one piece, with a dart at the underarm. Material—eiderdown. The cording was removed carefully and used again.

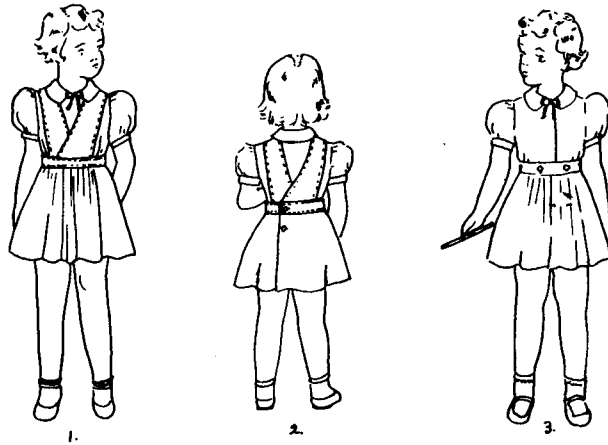


**SIMPLICITY PATTERN 4348**

Size 8



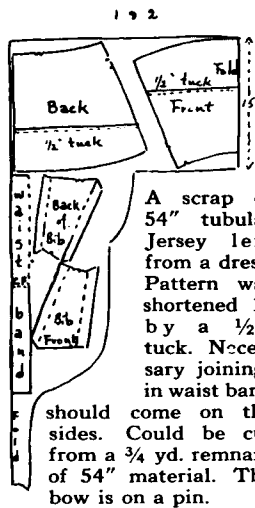
## Proud as a Peacock!



### MCCALL PATTERN 5096

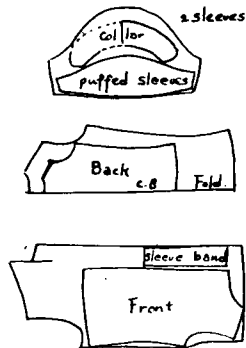
Size 4

Very versatile design — may be anything from sun dress (skirt alone) to warm winter costume in which muslin blouse gives way to sweater. If material is very, very scant the straps and back lap may be exchanged for the buttoned band.



A scrap of 54" tubular Jersey left from a dress. Pattern was shortened 1" by a 1/2" tuck. Necessary joinings in waist band should come on the sides. Could be cut from a 3/4 yd. remnant of 54" material. The bow is on a pin.

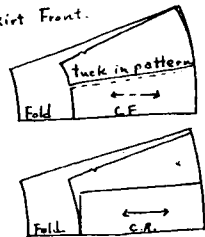
### Muslin Blouse, ripped apart.



For number 3 try sewing the buttons with thread to match the skirt.

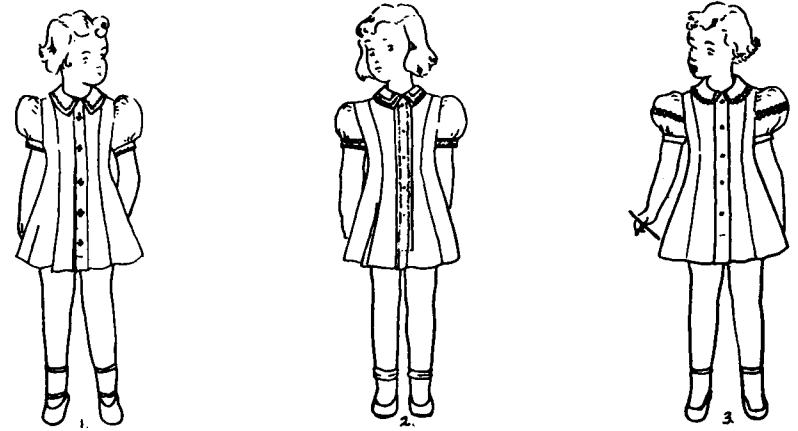
Cut from the skirt big sister wore when she was ten.

### Skirt Front.



Some of fullness removed from front by folding tuck in pattern. Back pattern turned in along centre back line. Skirt opens on left side. Red wool crepe.

## The Tale of a Shirt!



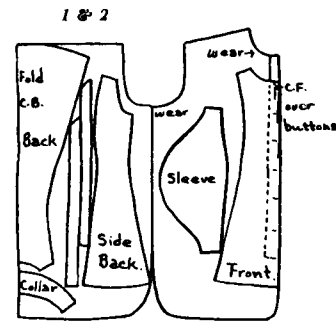
Dark blue stripes on light blue. Dark blue Rick-Rack Braid (narrow). Buttons to match Braid.

White broadcloth. Narrow Rick-Rack Braid — one row blue, one maroon.

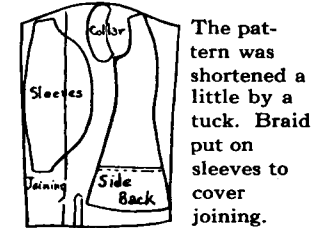
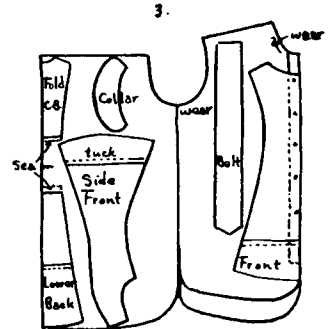
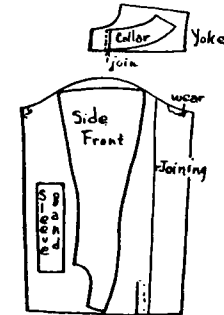
Navy and bright blue stripes on light blue. Two rows crimson Rick-Rack Braid, point to point, forming diamonds.

### MCCALL PATTERN 5003

Size 4



Back View



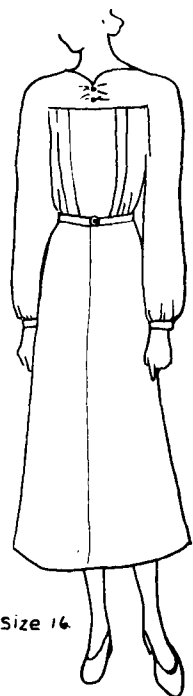
The pattern was shortened a little by a tuck. Braid put on sleeves to cover joining.

This shirt is now embarking on its third life, having been worn out twice already. One side had been raised to remove worn spot at neck.

# Who's Afraid -

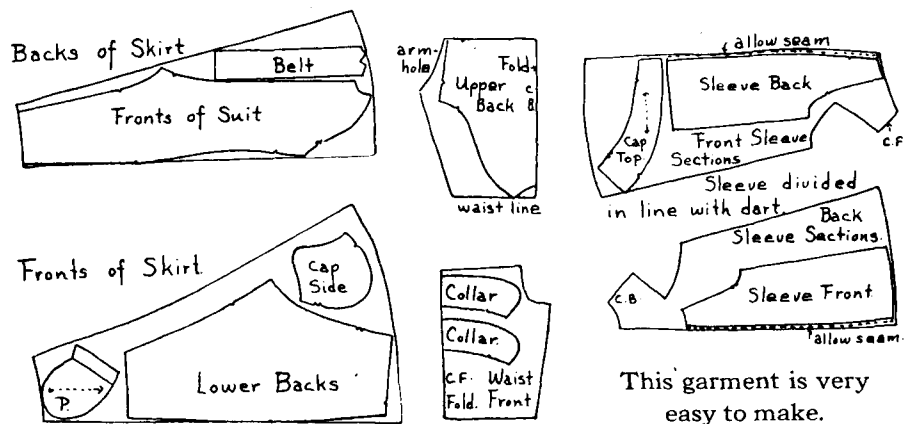
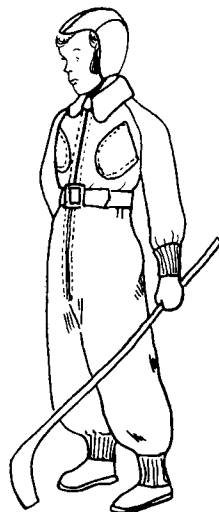
MCCALL  
PATTERN 9894

Size 4



Children's heads vary greatly in size and shape. Before cutting the helmet from material make one in cotton or cut the lining and baste it up. Put it on the child's head and make the necessary adjustments to give a good fit and ensure comfort.

It is a good idea to finish the edges of sleeves and legs before putting on knitted cuffs and trouser bands, as they may then be easily removed for washing.

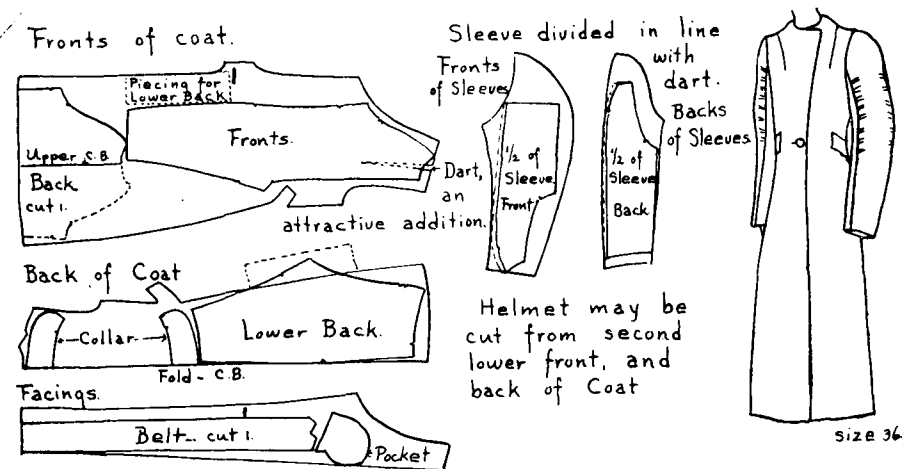


This garment is very easy to make.

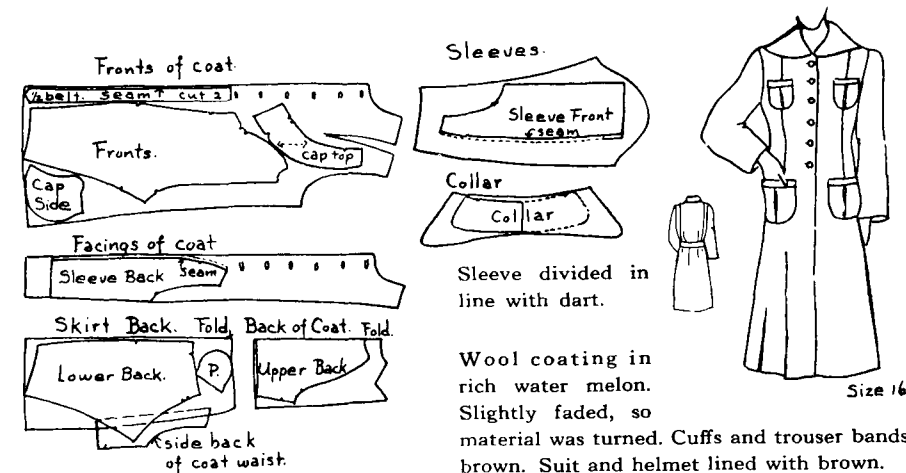
The dress above was a heavy velvet (cotton back), not considered wearable because the owner had made the mistake of cutting it with the pile running down. It was necessary to place the snow suit pattern with the tops of the pieces to the bottom of the dress.

# of a Big, Bad Storm?

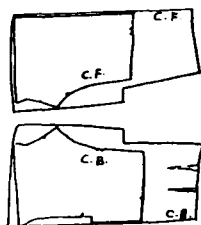
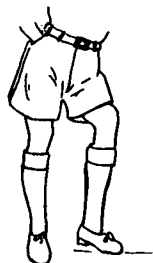
Below are layouts showing how this snow suit was cut from each of two coats, very different in design.



Eight years ago this winter coat was a thing of beauty, with fur collar and lots of style; but four years of hanging in the cupboard didn't add anything but moth holes. Entirely ripped and turned it became a beautiful brown snow suit, cheered up by warm orange cuffs and trouser bands.



## Trousers Short!



### Two Piece Skirt

Size 14

For the lad with a slender waist darts in the back make the trousers fit better.

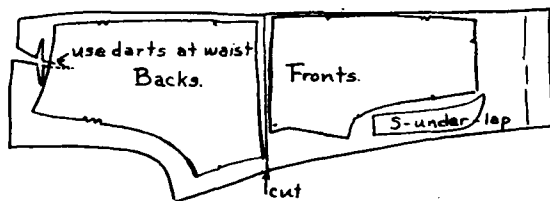


### VOGUE PATTERN 2299

Size 6

Source Material: One pair of white flannel trousers of medium size. The fronts were badly stained. The owner had cut the legs off, hoping to have a pair of shorts, which never got finished.

The new trousers come out of the 2 back leg pieces, right sides together to keep clean.



The top facing and the fly may be cut from one of the front legs.

NOTE: Always test white wools before washing. If they have been dry cleaned they may turn yellow.



### SIMPLICITY PATTERN 3502

Size 8

## Trousers Long!

Nothing like them for blustering winds



### HOLLYWOOD PATTERN 591

Size 6

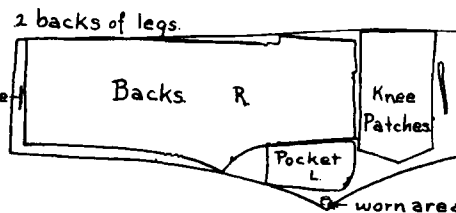
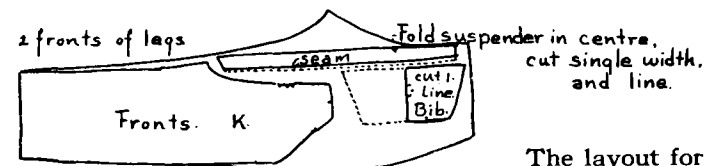
### SIMPLICITY PATTERN 3650

Size 8

A very good use for that old pair of trousers a bit the worse for an overdose of gardening.



They will look like new material when ripped, washed and turned. Hold material to the light to spot blemishes — mark them with pins.



The layout for the overalls is given, because there are more pieces to get out.

The placket and waist treatment for trousers depends upon the age of the boy. For the very young lad it is essential that the trousers button to the blouse, or that they be held in place by shoulder straps or braces. Around the age of five the buttons are concealed, and by the time the young man is eight he is likely to spurn them altogether and trust to a belt or braces (real grown-up ones, like Dad's).

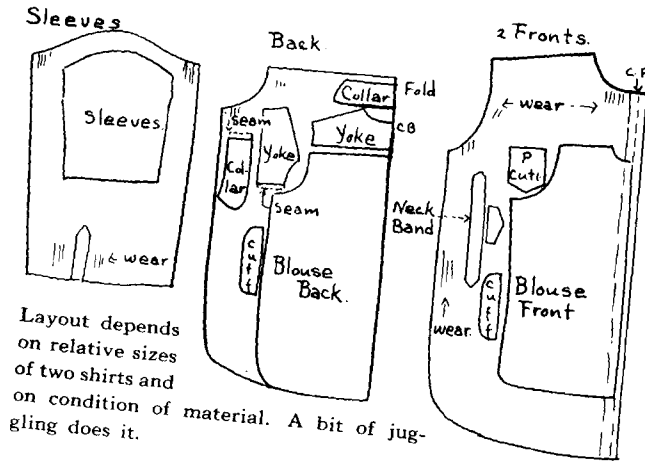
# More Shirt Tales



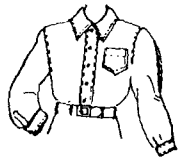
**VOGUE  
PATTERN 2299**

Size 6

From Dad's  
Shirt.



Layout depends on relative sizes of two shirts and on condition of material. A bit of juggling does it.

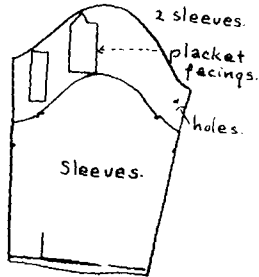


**SIMPLICITY  
PATTERN 4973**

Size 8

(Omit Yoke)

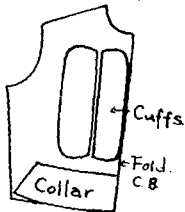
From wool crepe dress. Gray with maroon tie and belt. To be worn with gray trousers — long — p. 17.



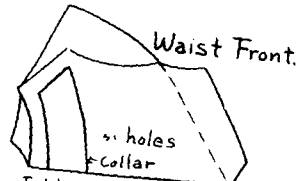
**Lady's Dress**

Size 16

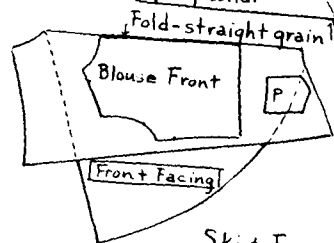
Covered with ornamental stitching, which was ripped. Material turned for fresher color. Waist front and skirt bias.



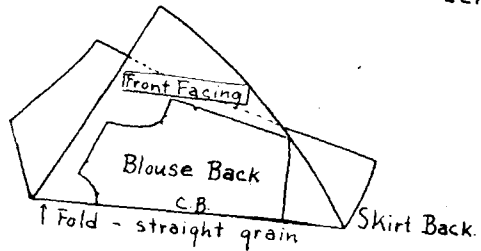
Waist Back.



Waist Front.



Skirt Front.

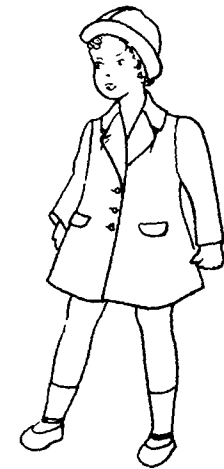
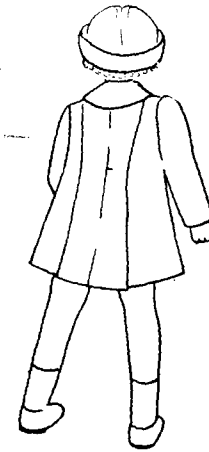


Skirt Back.

# Another Miracle

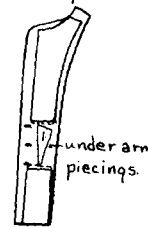
**FROM  
Coat and Hat**  
Size 3

Note the four-piece back, with side pleats.

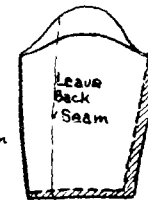


Fronts slashed for pockets.

Facings.



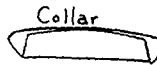
Sleeves.



Joining comes under arm. Almost invisible if well pressed.

**TO  
Jacket and Cap**

Size 6



Collar

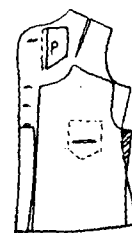
**HOLLYWOOD  
PATTERN 591**

Size 6

Beautiful blue  
Homespun.

The hat was stripped of its feminine touches and blocked.

Fronts



Back.

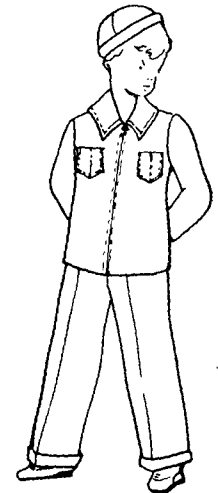


Facings - sleeves.

c.B. Fold on Seam.

Placed so that patch pockets will cover slashes.

Stitch seams to bottom and use pleat allowances to piece sides of sleeves.



Pockets joined in centre, finished with stitching.

# Suits from Trousers!

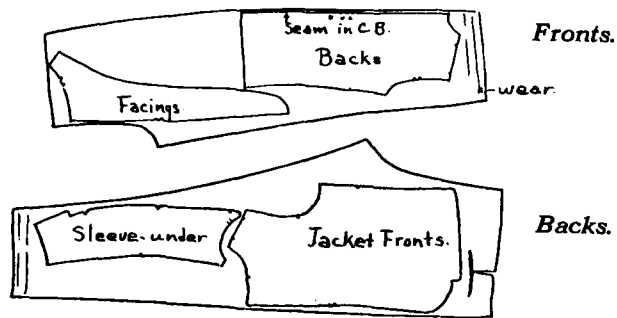
SIMPLICITY PATTERN 3502

Size 8

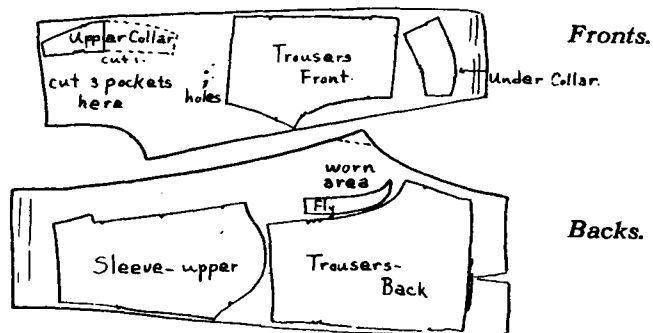


The layout below shows how this suit was cut from two pair of navy blue serge trousers, which were worn, moth eaten and stained. The pants were entirely ripped. The material was washed and turned.

First Pair of Trousers.



Second Pair of Trousers.



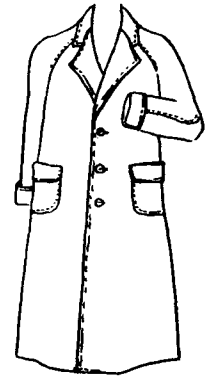
Hold material to light and mark holes, etc., with pins. Work with two new right sides out, so that surface can be checked, and blemishes avoided.

# Suits from Coats!

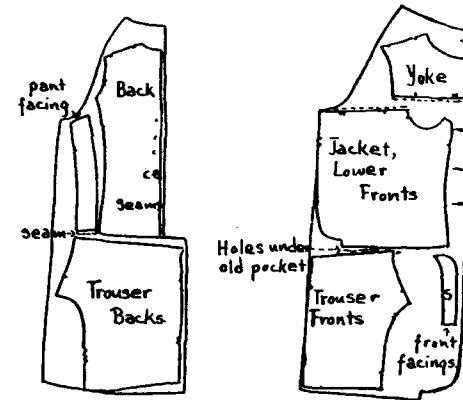
Same suit from a man's gray tweed coat.

A perfect winter outfit.

The coat was very old and moth eaten, but the wrong side was fresh in color and well surfaced, so the material was turned.



The top of the front had to be cut off, forming a yoke. The pattern was marked at corresponding points for matching, and seams were allowed. The yoke line was used for inserted breast pockets, which gave it an apparent excuse for being there.



Back of Coat.

Front of Coat.

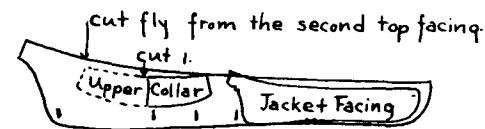
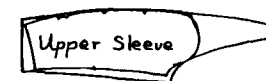


Detail of yoke and pocket. See page 23 — Special Note.

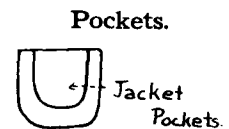
Half of Sleeve.



Half of Sleeve.



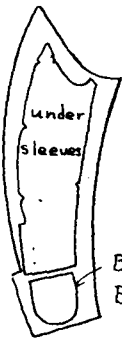
Trouser lining cut from an old cotton slip.



# Yes! It can be done

A man's jacket, ripped up, is a very formidable looking piece of raw material, with its many darts, slashes, pocket holes and buttonholes, that will persist in turning up just where they are least wanted in the new garment. Here is a plan for cutting a boy's jacket, size 8, from a man's jacket, size 36, without using any joinings that won't look as if they belonged there.

Under Sleeves.

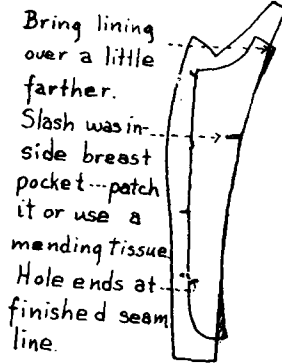


Backs for Breast Pockets

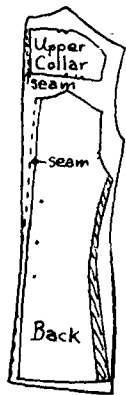
Upper Sleeves.



Facings.



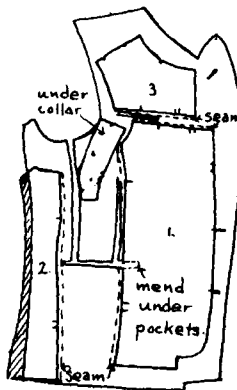
Bring lining over a little farther. Slash was in side breast pocket... patch it or use a mending tissue. Hole ends at finished seam line.



Backs.

The front must be divided into three sections, lower front (1), underarm (2) and yoke (3). Separate 1 and 2 at the first dart, curving in a little at waist line. Add to the back a strip equal to what is short on 2. Separate 1 and 3 on a line following that of the breast pocket slash. Treat the yoke line as suggested on page 25.

Material was washed and turned.



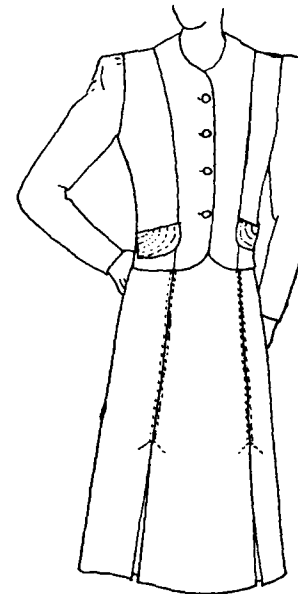
Fronts.

SIMPLICITY PATTERN 3502

# Lady's Suit becomes Boy's Jacket!

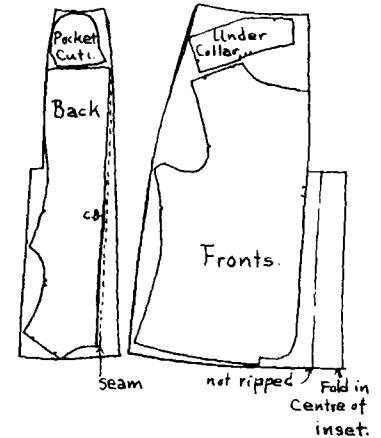
SIMPLICITY PATTERN 3502

Size 8

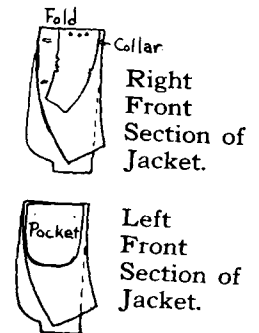
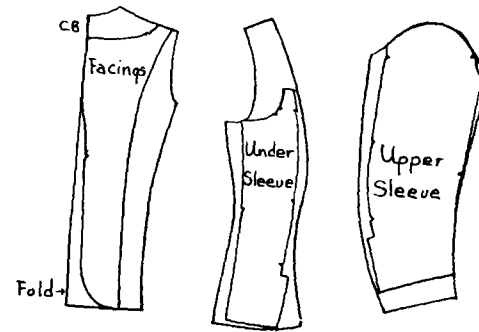


Soft navy blue suiting, worn threadbare, but good as new on the wrong side. Perfect with the white flannel pants on page 16, for special occasions. Front panel of skirt and pleat insets make cap, and belt for trousers.

Side Fronts. Back.



Back. Side Back. Upper Sleeve.

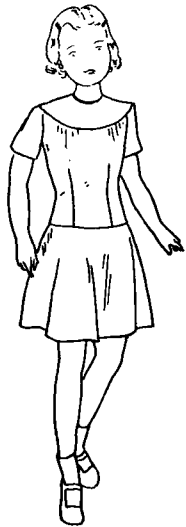


SPECIAL NOTE: Before putting in buttonholes, put the jacket on the boy and adjust the roll of the lapels. Then mark button positions.

# One Pattern—

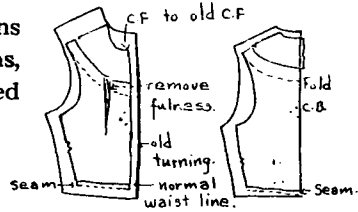
Introducing a problem in Yokes

Size 10



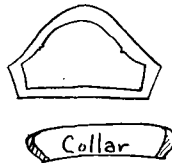
The sketch to the left is presented as a type. It is a two-piece dress with yokes in both waist and skirt. The three models based on it show how the pattern pieces may be combined to suit the material available. Designs with yokes may be found in any pattern book.

Pin yoke patterns to lower sections, matching finished seam lines.



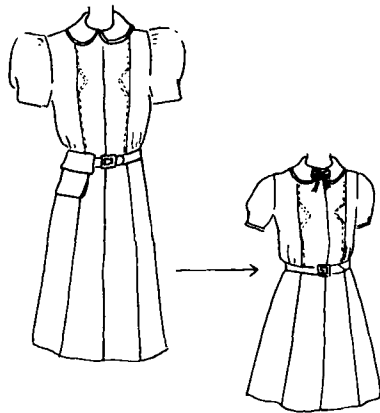
Waist Front. Waist Back.

Sleeves.



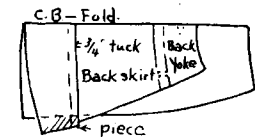
Collar

Original collar, taken in 1/2" at ends, and piping put back on new line. Sleeves piped to match. Neck bow on safety pin. Ribbon belt — stitched.



DRESS I — One-piece.

Figured — green predominating.



Skirt Back.



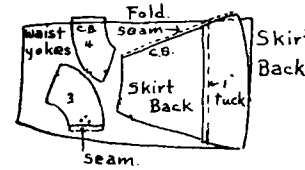
Skirt Front.

Pattern gives entire skirt back and front. Fold them in centre. Pin skirt yokes to lower sections. Skirt shortened by 3/4" tuck.

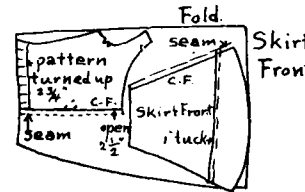
# Three Dresses

DRESS II — One-piece.

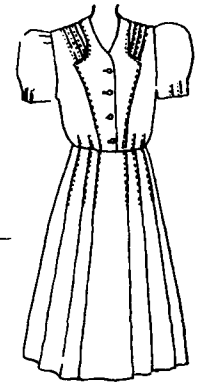
White figures on rose.



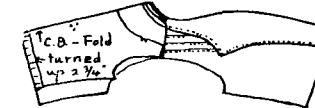
Skirt Back.



Skirt Front.



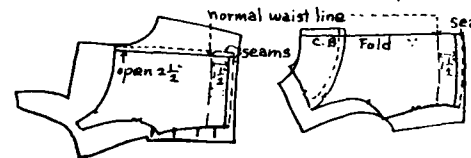
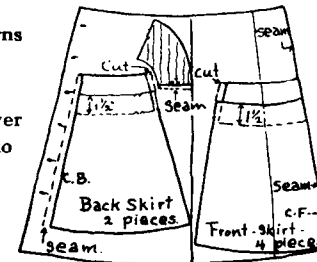
Skirt patterns folded in centre — cut 4 pieces, seams in C.F., C.B. and sides.



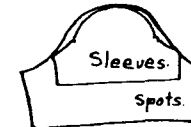
Sleeves

Skirt patterns folded in centre.

Lap skirt over yoke 1 1/2" to allow for dropping waist 1 1/2".



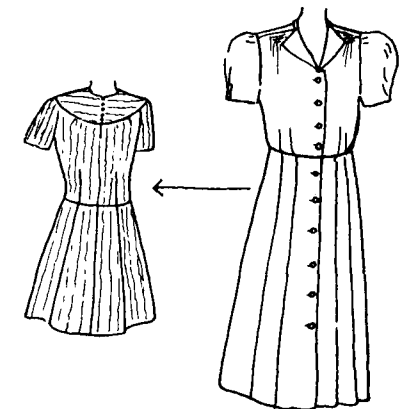
No yoke in back so pin yoke pattern to lower back, matching finished seam lines.



Sleeves Spots.

DRESS III — One-piece.

White figures (in stripes) on blue.



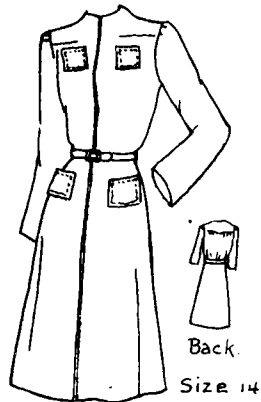
Material was faded, it was turned.

# Cut Your Garment —

BUTTERICK PATTERN 2693

Size 10

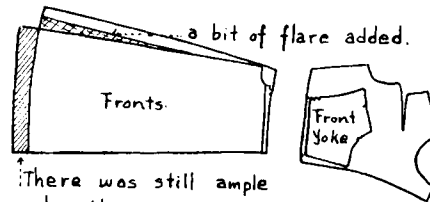
A practical, easy-to-make model, lending itself readily to the alterations imposed by the lines of old coats, suits, etc. Very "chic" too! For misses' and ladies' coats apply the same principles to Butterick Pattern 2420, which comes in sizes 12-44.



Back.  
Size 14

Dusky-rose coating — pretty well cut up. Zipper in front.

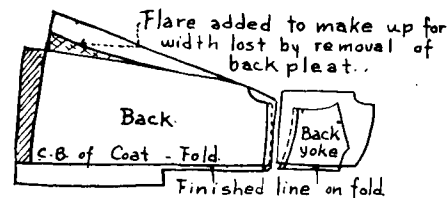
Lower Fronts. Upper Fronts.



There was still ample length.

Yoke used both front and back. Dark blue facings and collar from bits left from an old dress after a pair of trousers were cut. Buttons and bound buttonholes blue.

Lower Back. Upper Back.



To be worn with Dress II on page 25.

Sleeves.



COAT I.



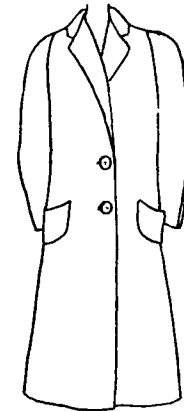
Back View

Beanie from scraps of blue — bow on tip, blue and rose grosgrain ribbon.

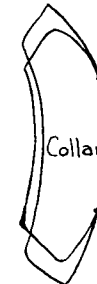
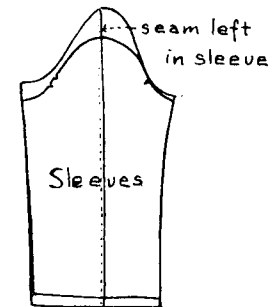
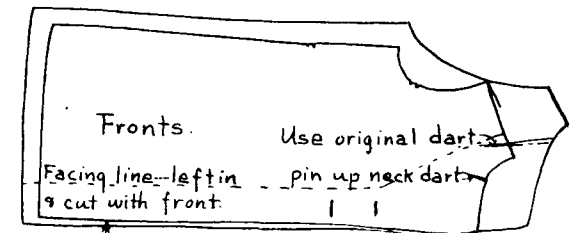
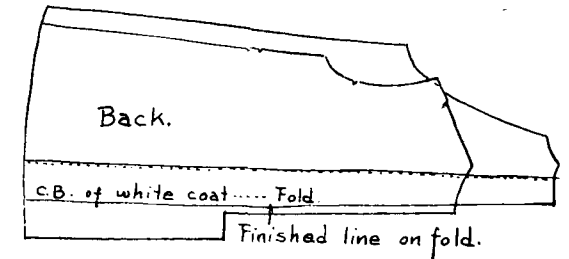


# According to your Cloth!

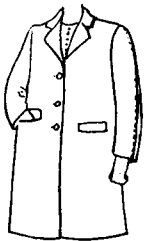
Two more variations from BUTTERICK PATTERN 2693.



White, basket weave. It was dyed blue to harmonize with Dress III on page 25.



COAT II — Finished. Beanie to match coat material with navy stitching and bow.

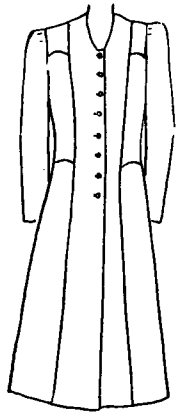


COAT III — Of green tweed, was cut from a lady's coat and skirt, very badly moth eaten. The back was like the pattern, the sleeve like the one in Coat II, and the front had to have a narrow shoulder yoke to eke out the length. With beanie to match it lives with Dress I, page 24.

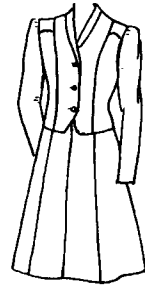
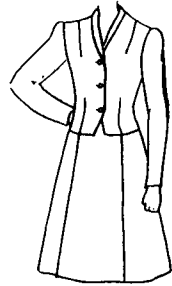


# The last word...in smartness

It was a coat, size 14.



Now it's a suit, size 10.

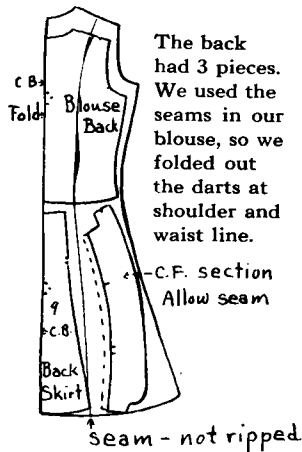


BUTTERICK PATTERN

2664

Made in Sizes 6-14

Back.



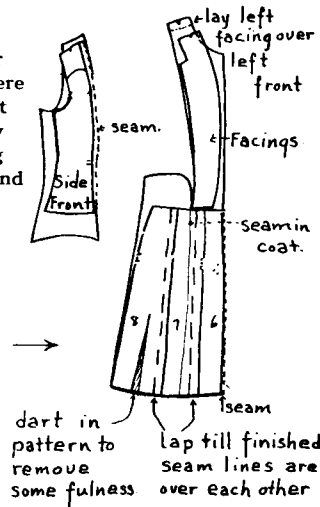
Sleeve.



The upper pockets were left. Front divided by connecting shoulder and waist line darts.

Seams left in front skirt of coat. Centre front (6), side front (7) and side back (8) sections of skirt were pinned together.

Fronts.



Navy blue wool suiting.

# Lady's Suit from Man's Suit

Before doing any ripping it pays to check the size of the suit.

I. Put the jacket on and make the following observations:

a. If the garment is too small all over, and there is only one pair of pants, it probably won't make a tailored suit, but may be used alone or combined with another piece of material in a different type of costume.

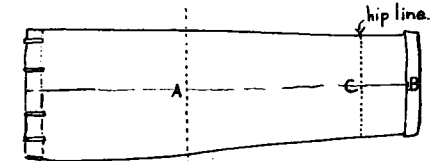
b. If the jacket fits fairly well, it may be adjusted easily to suit the feminine figure. Loosen the lining at the bottom and make the waistline more form fitting by removing the unnecessary padding, and by putting in lengthwise darts, or curving the seam lines in at the waist. The width of the sleeves may be adjusted at the seams. Adjust the length of the sleeve and of the jacket to suit the individual. To add a little extra width at the hip it is possible to use link buttons, thereby making use of the buttonholes already present on the left side.

Sometimes the back, or the entire jacket, needs raising — in which case the collar and sleeves should be loosened in the back, or entirely. This alteration gives the shoulder line a better position, brings the breast pocket and lapels higher, and makes the armhole smaller (adjust sleeve to fit). In many cases it also removes a bulge that may appear between the shoulders.

c. If the jacket is hopelessly large, it is better to rip it all apart and turn the material for new surface. Try a scrap before washing the pieces.

IIa. To be sure the skirt will come out of the trousers:

Put pin at (A) — widest part — will be bottom of skirt. Measure from (A) to the right the skirt length plus hem — place pin (B) — waist line. Measure from (B) to the left 7" — place pin (C) — hipline. Measure across the leg at the hip line, multiply by 4 and compare with your own 7" hip line.



b. The usual design is a 4-piece skirt. Very large trousers will make a very small woman a 6-piece skirt. When there are two pairs of pants there is no problem. Usually they will allow for new fronts for the jacket as well as a 6-piece skirt.

III. The waistcoat makes an attractive front for a dress or blouse. Shoulder and underarm edges are caught in regular seams.

DUBARRY

PATTERN

2675



(Continued on page 30)

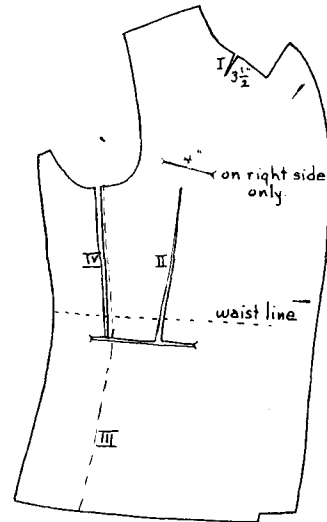
# This is How it's Done!

Select a suitable design.



**BUTTERICK  
PATTERN 2470**

Jacket front, ripped.



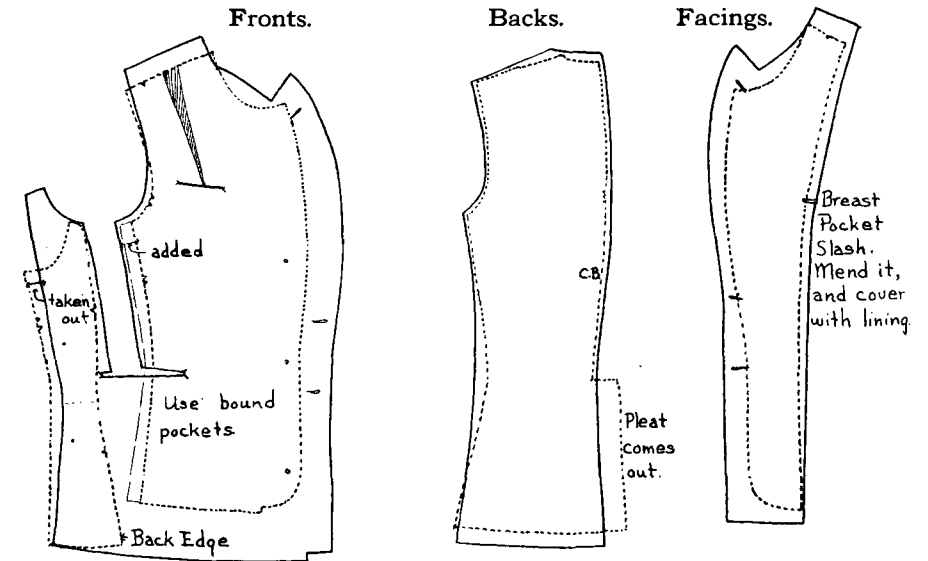
The man's suit has been ripped, washed and turned. Hold material to the light and mark holes and weak spots with pins. Proceed with cutting:

a. Baste fronts at I and II, moving II forward at the bottom until it is parallel to C.F. line. Pin a seam at IV and fold in the slack at III so that it makes a continuous line from the armhole to the bottom, and so that the waist line is the narrowest point, with the garment flaring out again below the waist. Drape the front section on the wearer — to test the position of the darts and slashes and to check the allowances for the feminine curves. The shoulder line on the pattern is too long for the material. The darts already present in the material, in this case provide enough curve, so the shoulder dart is folded out.

b. Pin the underarm section of the pattern to the front section, matching the finished seam lines. Lay the pattern over the fronts. Mark the position of III and IV on the underarm section. It is a help to chalk around the pattern, remove it, and test the front by holding it against the person again.

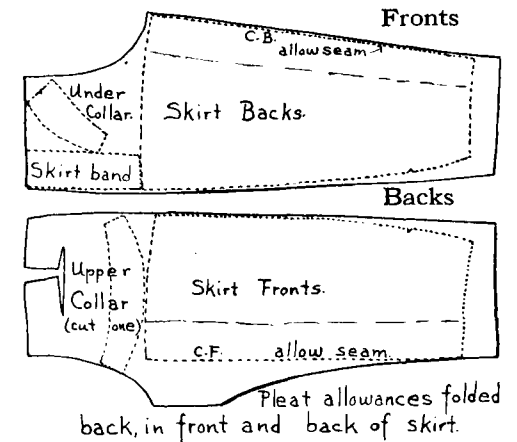
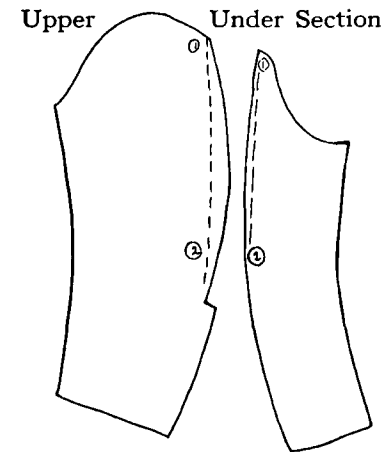
c. Thread mark the finished lines at III and IV on the material, open it out flat again. Lay the two fronts together and pin the pattern on the material for cutting.

**NOTE**—This treatment provides an opportunity for moving the lower pockets forward and shortening them. The breast pocket is duplicated on the left side. If it is too big or badly placed it is possible to use a yoke line (see p. 21 and 22), with or without pocket. Patch pockets are sometimes used to cover old slashes. A pocket may be made to appear higher by finishing it with a welt.



Sleeves

Trousers



d. Sleeve Problems.

In a few cases the pattern will fit on the old sleeve sections. Usually the back seam on a man's sleeve is too high, thereby making the upper section too narrow to cut the upper section of a woman's sleeve. To avoid conspicuous piecing it is possible to change the position of the back seam. Pin the seam in the old sleeve from (1) to (2), straightening it. Matching the finished seam lines, pin the upper and under sections of the pattern together at the same place. Lay pattern over sleeve, mark top and side lines. Remove pattern and continue pinning back seam to bottom of sleeve.

## **Re-Make Centres**

First aid for limp and "tired" garments is the service of the Re-Make Centre. In these centres, in towns and cities across Canada, expert needlewomen are ready to assist you in re-cutting your outmoded fashions, and to guide you in styling, fitting and finishing your proud production.

Look for the Re-Make Centre near your community. Take your re-make problems there for help in solving them.